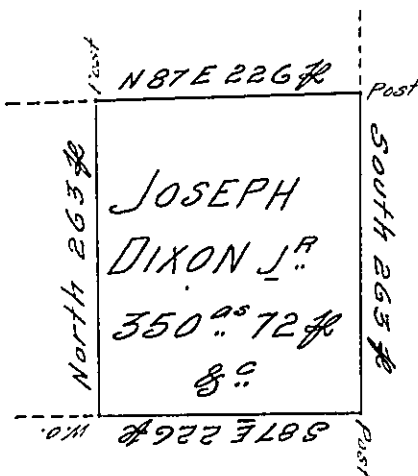


James Buchanan

John Wray



Donation Land

Donation Land

Situate on the west side of French Creek
 in Allegheny County Containing 350^{ac} 72^{sq} and Allow-
 ance of six ¹/₄ Cent for Roads &c. Surveyed the
 15th day of May 1795 In pursuance of his Improve-
 ment Bearing date the 2^d day of April 1795 —

W^m Power D^x Sr.

To Dan^l Brodhead Esq^r }
 Surveyor General }

IN TESTIMONY that the above is a copy of the original remaining on file in
 the Department of Internal Affairs of Pennsylvania, made
 conformably to an Act of Assembly approved the 16th day of
 February, 1833, I have hereunto set my Hand and caused
 the Seal of said Department to be affixed at Harrisburg,
 this twenty-fifth day of June 1906

Laurel B. Brown
 Secretary of Internal Affairs.